

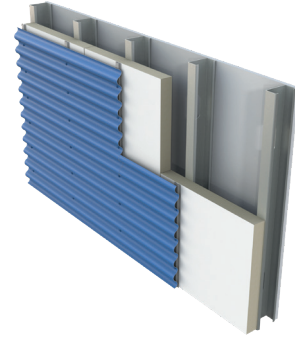
PAC-Shield CI Polyiso Wall Products



PAC-SHIELD CI COATED GLASS AND COATED GLASS (CLASS A)

Insulation Manufactured On-Line to Premium Performance Coated Glass Facers

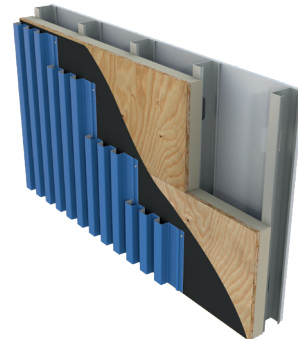
- ▶ Coated glass facer offers versatility in walls
- ▶ Can be installed directly on steel studs in a variety of wall assemblies without the need for gypsum sheathing
- ▶ Available thicknesses 1" – 4"
- ▶ R-values 6.0 – 25.0



PAC-SHIELD CI PLY AND PLY (CLASS A)

Insulation Bonded to Fire Treated Plywood

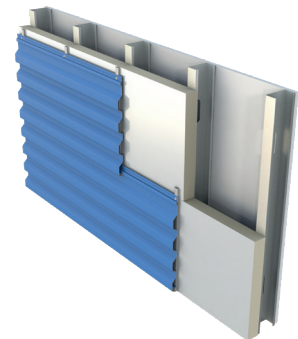
- ▶ Can be installed directly to steel studs or wood framing without the need for gypsum sheathing
- ▶ Optimal substrate for mechanically attaching cladding materials
- ▶ Available thicknesses 1.6" – 4.7"
- ▶ R-values 6.8 – 26.0



PAC-SHIELD CI FOIL AND FOIL (CLASS A)

Insulation Manufactured On-Line to Foil Facers

- ▶ Reflective foil faced material offers maximum energy efficiency/R-value
- ▶ Excels in masonry cavity wall applications
- ▶ Available thicknesses 1" – 4"
- ▶ R-values 6.5 – 27.0 (Foil)
- ▶ R-values 6.3 – 25.2 (Foil Class A)



PAC-SHIELD CI NAIL BASE

Insulation Bonded to OSB or Plywood

- ▶ Wood composite material designed for use in residential and Type V commercial applications
- ▶ Optimal substrate for mechanically attaching cladding materials
- ▶ Thicknesses 1.5" – 4.5", R-values 6.6 – 25.6 (OSB)
- ▶ Thicknesses 1.6" – 4.6", R-values 6.8 – 25.8 (ply)

