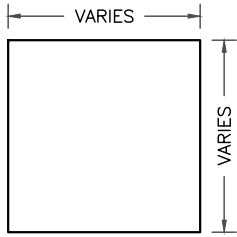


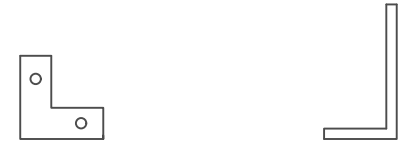
COMPOSITE WALL - PAC-3000 CS - WOOD SUBSTRATE DETAILS

PANEL INFORMATION



MAX PANEL WIDTH: 60"
MIN. PANEL WIDTH: 4"
MAX PANEL LENGTH: 194"
MIN. PANEL LENGTH: 4"

ACCESSORIES



CORNER SUPPORT
ANGLE BRACING

PAC-3000 CS CLIP

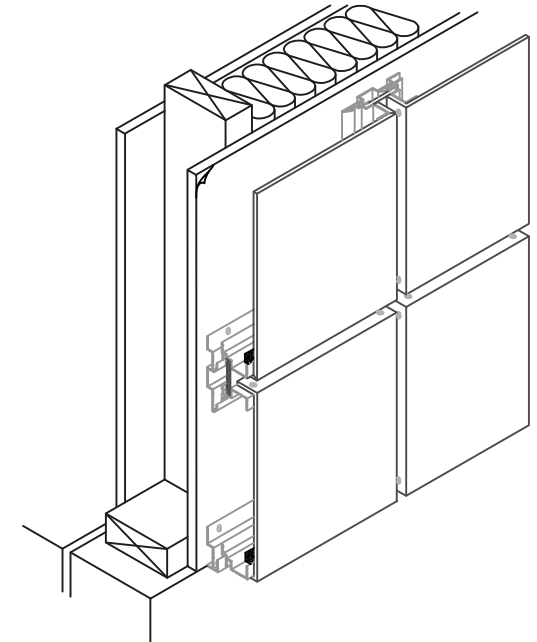
EXTERNAL MATERIAL OPTIONS

STAINLESS STEEL
ZINC
COMPOSITE
ANODIZED ALUMINUM
MILL FINISH ALUMINUM

INTERNAL MATERIAL OPTIONS

POLYETHYLENE-PE
POLYETHYLENE-FR
PHENOLIC-FR

SYSTEM ISOMETRIC



FINISH OPTIONS

PAINTING
HYLAR 5000 / KYNAR 500.

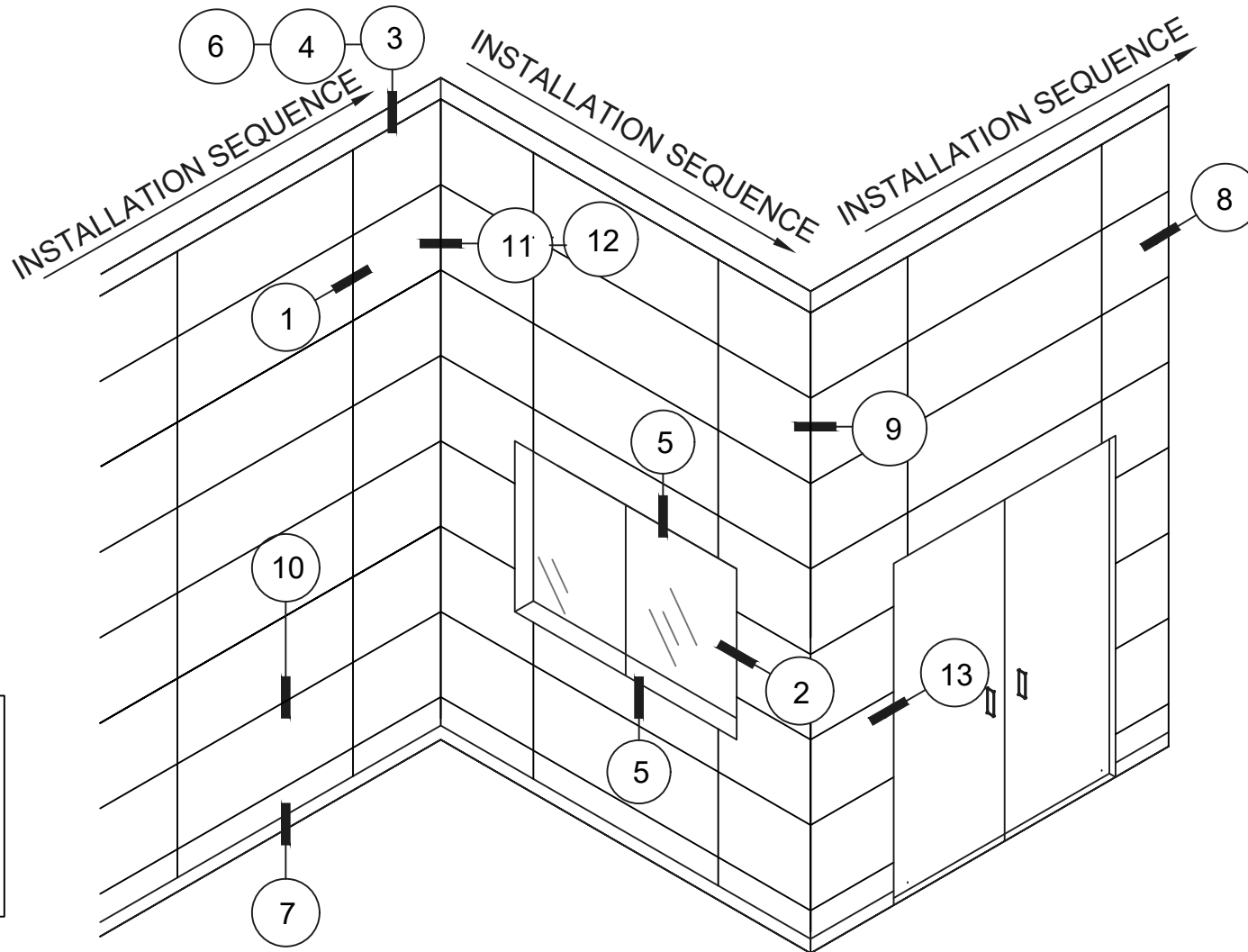
ANODIZING
COIL ANODIZING IS AVAILABLE FOR CLEARS,
BRONZES, AND VARIOUS OTHER COLORS FOR
COLOR CONSISTENCY.

CUSTOM COLORS
CUSTOM COLOR SERVICES CAN BE PROVIDED FOR
MATERIAL, SHADE, OR TINT MATCHING.

NOTES:

1. HEAVIER GAUGES, NARROWER WIDTHS, AND EMBOSSING MINIMIZE "OIL CANNING."
2. OIL CANNING IS NOT A CAUSE FOR REJECTION.
3. AN EXTENSIVE SELECTION OF ASSOCIATED PANEL FLASHINGS AND TRIMS ARE AVAILABLE.
4. CONTACT PETERSEN ALUMINUM CORP. FOR UP-TO-DATE TECHNICAL INFORMATION AND MATERIAL LIMITATIONS.
5. ALL SYSTEMS WITH TESTING MUST BE INSTALLED IN ACCORDANCE WITH THE ASSEMBLY AS TESTED.

COMPOSITE WALL - PAC-3000 CS - WOOD SUBSTRATE DETAILS
PANEL DETAIL INDEX



ABBREVIATIONS:
 ACM = ALUM. COMPOSITE MATERIAL
 B.O. = BY OTHERS
 O.A. = OVERALL SYSTEM PANEL DIMENSION
 P.D. = PANEL DIMENSION
 P.H. = PANEL HEIGHT
 P.W. = PANEL WIDTH

KEY:
 1. HORIZONTAL JOINT
 2. WINDOW JAMB
 3. SOFFIT DETAIL
 4. SOFFIT DETAIL (ALT.)
 5. WINDOW HEAD
 7. SILL
 8. JAMB
 9. OUTSIDE CORNER
 10. VERTICAL JOINT
 11. INSIDE CORNER
 12. INSIDE CORNER (ALT.)
 13. DOOR JAMB