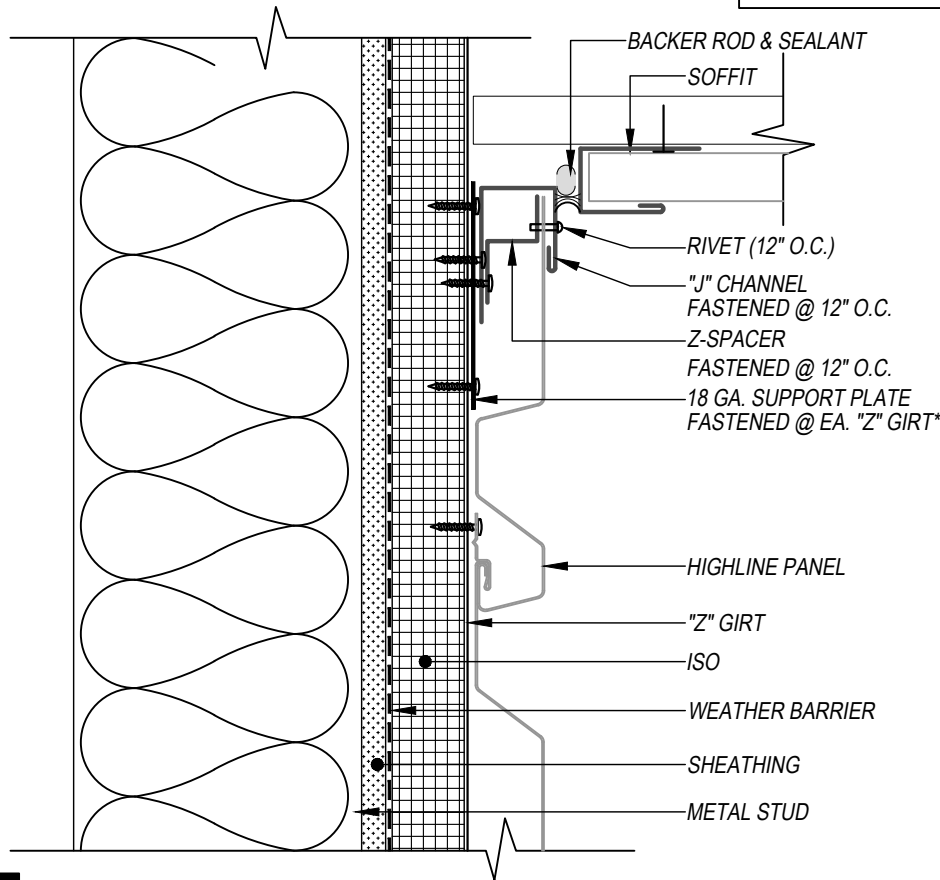


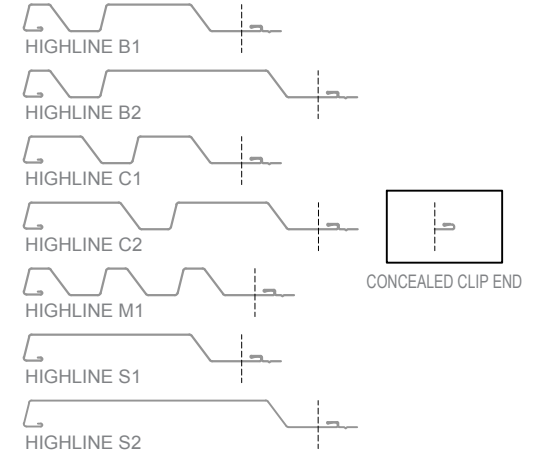
HIGHLINE SERIES - Z-GIRT WALL-TO-SOFFIT DETAIL HORIZONTAL APPLICATION



** MAY OMIT SUPPORT PLATE IF ATTACHING TO STRUCTURAL MEMBER*

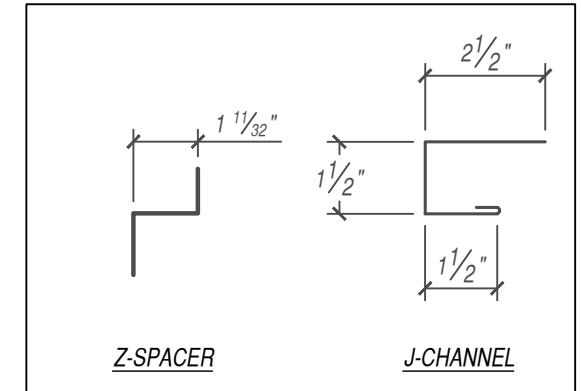


THIS DETAIL DRAWING IS APPLICABLE TO ALL HIGHLINE SERIES WALL PANEL PROFILES

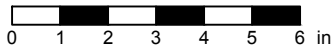


KEYNOTES:

- TRIM FASTENERS ARE SELF-DRILL PANCAKE HEAD AND MUST BE INSTALLED IN A STAGGERED PATTERN
- FASTENERS MUST PENETRATE STEEL SUBSTRATE BY 5/8" MINIMUM THREAD LENGTH



SCALE: 3" = 1'-0"



EFFECTIVE DATE: 01-03-2023
 SUBJECT TO CHANGE WITHOUT NOTICE

DISCLAIMER: DETAIL SHOWN FOR ILLUSTRATION PURPOSES ONLY. ACTUAL PROJECT DETAIL MAY VARY