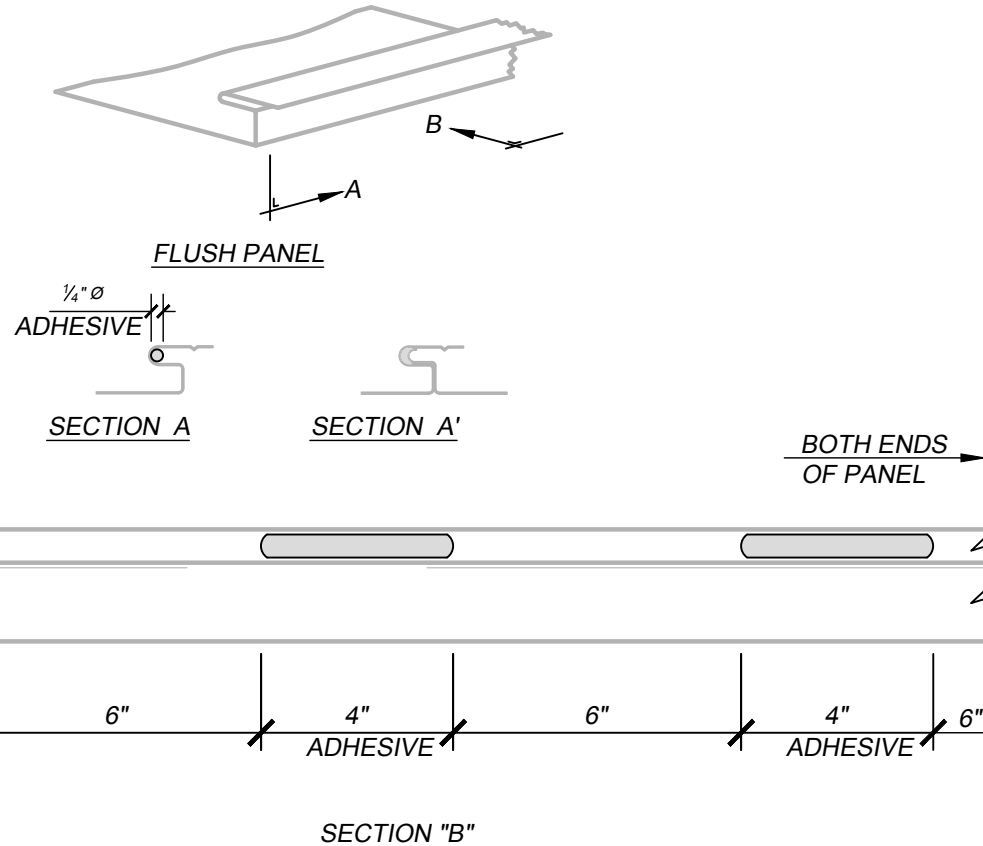


# FLUSH - Z-GIRT - SUBSTRATE DETAILS ANTI-DISENGAGEMENT INSTALLATION DETAIL VERTICAL APPLICATION



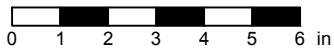
**KEYNOTES:**

- TRIM FASTENERS ARE SELF-DRILL PANCAKE HEAD AND MUST BE INSTALLED IN A STAGGERED PATTERN
- FASTENERS MUST PENETRATE WOOD SUBSTRATE BY 5/8" MINIMUM THREAD LENGTH
- FASTENER SPACING VARIES BASED ON PROJECT SPECIFIC LOADS AND/OR LOCAL BUILDING CODES

**NOTES:**

1. ADHESIVE TO BE FIELD APPLIED.
2. PANEL JOINT ELEMENTS TO BE WIPED CLEAN AND DRY.
3. JOINT ASSEMBLY MUST BE WITHIN 30 MINUTES OF ADHESIVE APPLICATION.
4. ADHESIVE BEADS MUST HAVE A 6" GAP BETWEEN BEADS TO ALLOW FOR ADHESIVE MOVEMENT AS BEAD IS COMPRESSED AND DISPLACED VIA MALE EDGE ENGAGEMENT.
5. TO PREVENT JOINT GAPS, THE ENGAGING PANEL MUST SLIDE ( $\pm 1/2"$ ) "BACK AND FORTH" DURING THE MALE EDGE ENGAGEMENT PROCESS.

SCALE: 3" = 1'-0"



EFFECTIVE DATE: 01-03-2023  
SUBJECT TO CHANGE WITHOUT NOTICE

DISCLAIMER: DETAIL SHOWN FOR ILLUSTRATION PURPOSES ONLY. ACTUAL PROJECT DETAIL MAY VARY