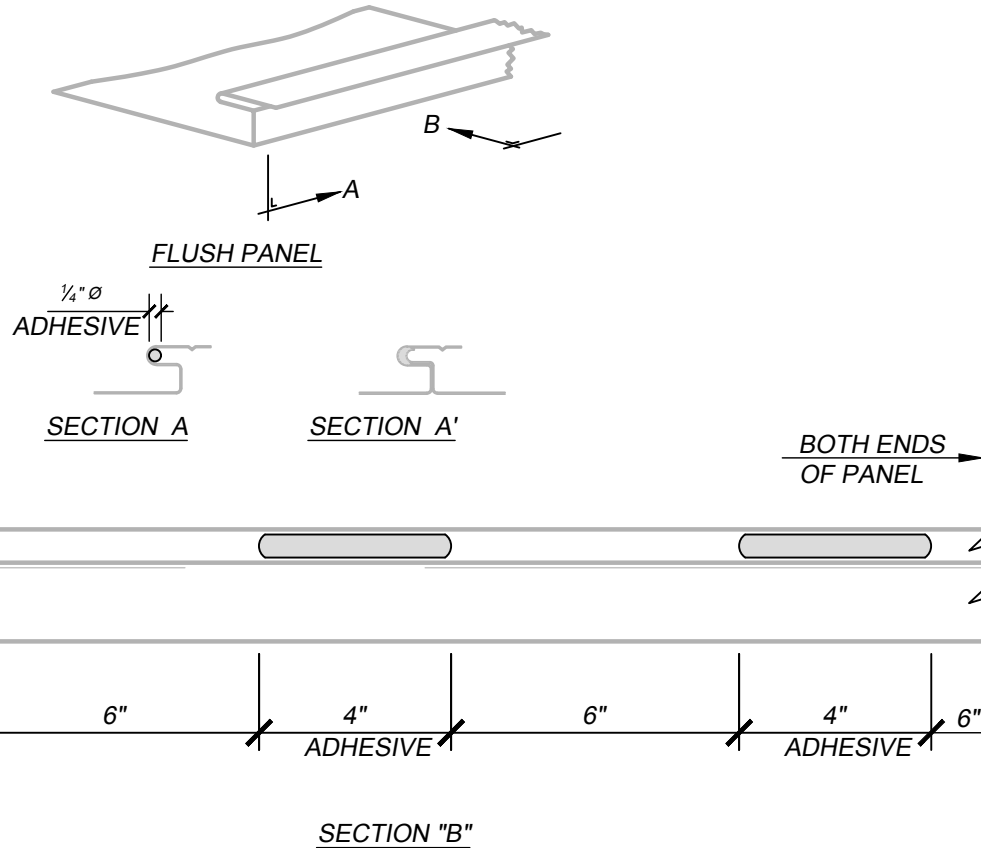


FLUSH - WOOD SUBSTRATE DETAILS
ANTI-DISENGAGEMENT INSTALLATION DETAIL
HORIZONTAL APPLICATION



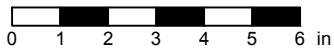
KEYNOTES:

- TRIM FASTENERS ARE SELF-DRILL PANCAKE HEAD AND MUST BE INSTALLED IN A STAGGERED PATTERN
- FASTENERS MUST PENETRATE WOOD SUBSTRATE BY 5/8" MINIMUM THREAD LENGTH
- FASTENER SPACING VARIES BASED ON PROJECT SPECIFIC LOADS AND/OR LOCAL BUILDING CODES

NOTES:

- ADHESIVE TO BE FIELD APPLIED.
- PANEL JOINT ELEMENTS TO BE WIPED CLEAN AND DRY.
- JOINT ASSEMBLY MUST BE WITHIN 30 MINUTES OF ADHESIVE APPLICATION.
- ADHESIVE BEADS MUST HAVE A 6" GAP BETWEEN BEADS TO ALLOW FOR ADHESIVE MOVEMENT AS BEAD IS COMPRESSED AND DISPLACED VIA MALE EDGE ENGAGEMENT.
- TO PREVENT JOINT GAPS, THE ENGAGING PANEL MUST SLIDE ($\pm 1/2''$) "BACK AND FORTH" DURING THE MALE EDGE ENGAGEMENT PROCESS.

SCALE: 3" = 1'-0"



EFFECTIVE DATE: 01-03-2023
SUBJECT TO CHANGE WITHOUT NOTICE

DISCLAIMER: DETAIL SHOWN FOR ILLUSTRATION PURPOSES ONLY. ACTUAL PROJECT DETAIL MAY VARY