

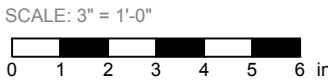
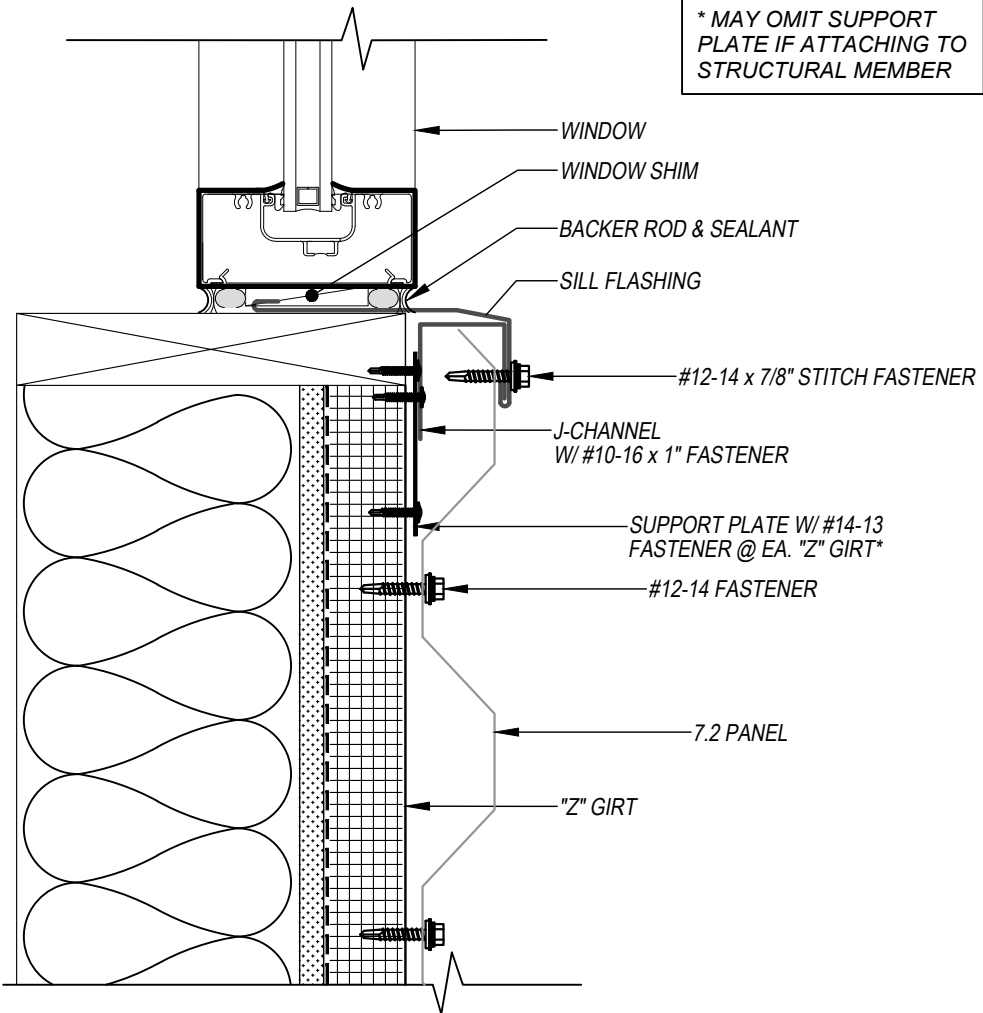
7.2 PANEL - Z-GIRT
WINDOW SILL DETAIL
HORIZONTAL APPLICATION



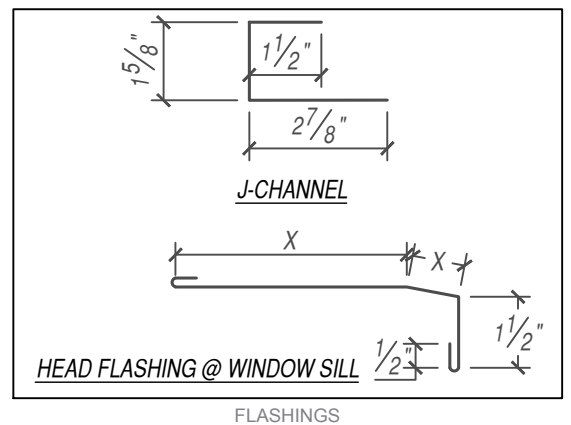
*** MAY OMIT SUPPORT PLATE IF ATTACHING TO STRUCTURAL MEMBER**

KEYNOTES:

- FASTENERS MUST PENETRATE TOP FLANGE OF "Z" PURLIN SUBSTRATE BY 5/8" MINIMUM THREAD LENGTH
- CLIP SPACING VARIES BASED ON PROJECT SPECIFIC LOADS AND/OR LOCAL BUILDING CODES



EFFECTIVE DATE: 01-03-2023
SUBJECT TO CHANGE WITHOUT NOTICE



DISCLAIMER: DETAIL SHOWN FOR ILLUSTRATION PURPOSES ONLY. ACTUAL PROJECT DETAIL MAY VARY