



Farabaugh Engineering and Testing Inc.

Project No. T302-11

Report Date: October 6, 2011

Total Pages (inclusive): 9

ASTM E330 STRUCTURAL PERFORMANCE TESTING

16" SIDING PANEL W/ NAIL GROOVE
22 GA STEEL

FOR

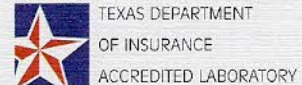
PETERSEN ALUMINUM CORP.
1005 TONNE RD.
ELK GROVE VILLAGE, IL 60007

Report Prepared By:

Paul G. Farabaugh

Reviewed and Approved By:

Patrick J. Farabaugh



Project No. T302-11

Purpose

This test method covers the evaluation of structural performance of the referenced test specimen per ASTM E330-02, "Standard Test Method of Exterior Windows, Doors, Skylights and Curtain Walls by Uniform Static Air Pressure Difference" and as provided herein.

Test Dates

9-20-11 to 9-26-11

Test Specimen

Manufacturer: Petersen Aluminum Corp.
1005 Tonne Rd.
Elk Grove Village, IL 60007

Panel: 16" Siding Panel w/ Nail Groove, 22 ga steel (nominal)

Testing Apparatus

A vacuum test chamber was used with two static pressure taps located at diagonally opposite corners. A controlled blower provided a vacuum to uniformly load the specimen mock-up. Calibrated manometers were used to measure the pressure at each pressure tap. The uniform load pressure was performed in the negative direction to monitor wind uplift on the panel specimen mock-up. Calibrated deflectometers were attached to monitor panel deformation as shown.

Project No. T302-11

Installation

- The panels were installed on to 16 ga supports using #10-16 X 1" long pancake head self drill fasteners located on the panel nail groove. The panel side-joints were a tongue and groove type as shown on the attached detail.
- Plastic (4 mil thick) was employed loosely between the panels and subgirts and in the side joints to create a vacuum seal.

Procedure

- The test assembly was subjected to negative pressures to form an outward pressure at the values and time duration as shown in the attached table.
- Each pressure increment was held for at least 1 minute.
- Deflection movement of the assembly during the tests was recorded.
- Successive increments were achieved as above until failure or ultimate load was reached.

Project No. T302-11

TEST "A"

Specimen: 16" Siding Panel w/ Nail Groove, 22 ga steel

Support Spacing: 4 ft o/c

Panel Attachment to Support: #10-16 X 1" Self Drill Fasteners (1 per support)

NEGATIVE LOAD TEST

LOAD (PSF)	DEFLECTION READINGS (INCHES)					
	D-1	D-2	D-3	D-4	D-5	D-6
0.0	0	0	0	0	0	0
5.2	0.007	0.051	0.029	0.082	0.117	0.185
0.0	0.005	0	0.019	0	0	0.005
10.4	0.024	0.139	0.055	0.265	0.323	0.336
0.0	0.005	0.015	0.028	0	0	0.019
15.6	0.051	0.241	0.084	0.417	0.511	0.549
0.0	0.005	0.02	0.034	0	0.017	0.052
20.8	0.07	0.336	0.13	0.654	0.716	0.721
0.0	0.019	0.045	0.04	0	0.031	0.057
26.0	0.086	0.393	0.142	0.815	0.897	0.897
0.0	0.028	0.066	0.076	0.001	0.044	0.092
31.2	0.143	0.502	0.194	0.951	1.073	1.071
0.0	0.046	0.1	0.088	0.035	0.083	0.125
36.4	0.191	0.59	0.236	1.124	1.227	1.241
0.0	0.047	0.16	0.1	0.079	0.122	0.18
46.8	0.189	0.769	0.277	1.394	1.515	1.539
0.0	0.069	0.19	0.155	0.177	0.237	0.303
57.2	0.264	0.95	0.41	1.658	1.817	1.634
0.0	0.11	0.291	0.243	0.292	0.361	0.44
67.7	0.35	1.1	0.494	1.898	2.089	2.091
0.0	0.137	0.374	0.274	0.425	0.499	0.554
78.1	0.361	1.427	0.49	2.24	2.433	2.44
0.0	0.223	0.73	0.371	0.681	0.789	0.839
98.9	0.408	1.599	0.58	2.516	2.785	2.779
0.0	0.35	0.867	0.411	0.856	1	1.059

RESULTS:

Maximum Test Load = 162.7 psf (Panel sidejoint disengagement)

Project No. T302-11

TEST "B"

Specimen: 16" Siding Panel w/ Nail Groove, 22 ga steel

Support Spacing: 1 ft o/c

Panel Attachment to Support: #10-16 X 1" Self Drill Fasteners (1 per support)

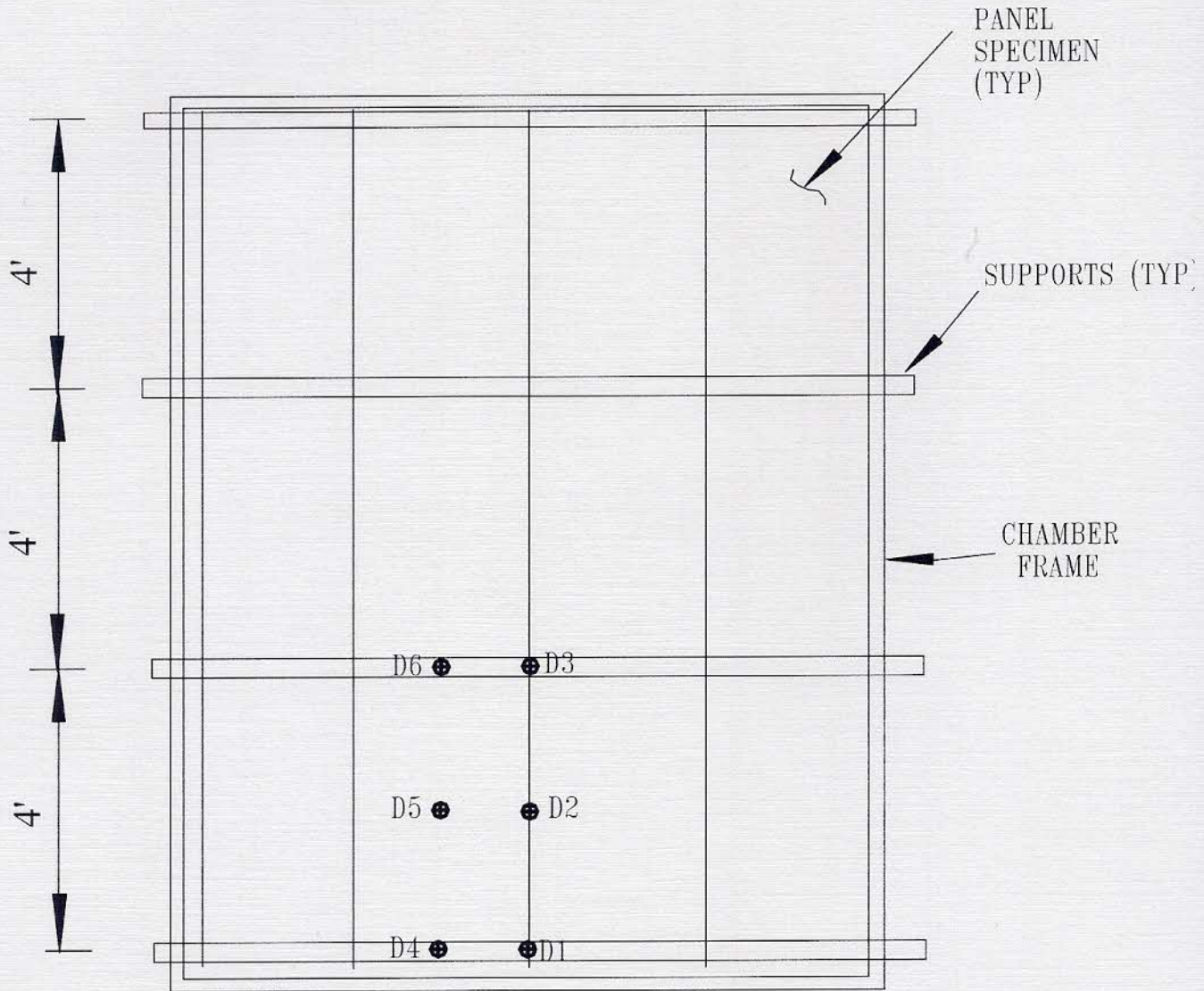
NEGATIVE LOAD TEST

LOAD (PSF)	DEFLECTION READINGS (INCHES)					
	D-1	D-2	D-3	D-4	D-5	D-6
0.0	0	0	0	0	0	0
15.6	0.009	0.037	0.036	0.282	0.277	0.278
0.0	0	0.028	0.015	0.02	0.009	0.007
31.2	0.03	0.07	0.05	0.6	0.59	0.592
0.0	0.004	0.028	0.028	0.02	0.023	0.007
46.8	0.036	0.085	0.103	0.88	0.857	0.862
0.0	0.006	0.028	0.032	0.031	0.023	0.012
62.4	0.12	0.091	0.127	1.109	1.089	1.086
0.0	0.018	0.029	0.055	0.035	0.034	0.03
78.1	0.125	0.104	0.137	1.307	1.298	1.286
0.0	0.023	0.039	0.075	0.08	0.061	0.066
93.7	0.151	0.115	0.154	1.483	1.473	1.478
0.0	0.041	0.046	0.075	0.171	0.15	0.156
109.3	0.169	0.137	0.161	1.689	1.658	1.67
0.0	0.069	0.066	0.075	0.293	0.28	0.287
124.9	0.201	0.174	0.23	1.886	1.854	1.873
0.0	0.069	0.072	0.081	0.461	0.446	0.451
140.5	0.253	0.215	0.286	2.099	2.066	2.095
0.0	0.093	0.088	0.109	0.648	0.676	0.646
166.5	0.292	0.232	0.304	2.488	2.469	2.46
0.0	0.097	0.126	0.128	1.113	1.118	1.103
192.5	0.348	0.327	0.329	2.8	2.773	2.765
0.0	0.122	0.159	0.202	1.432	1.43	1.398

RESULTS:

Maximum Test Load = 192.4 psf (Panel sidejoint disengagement)

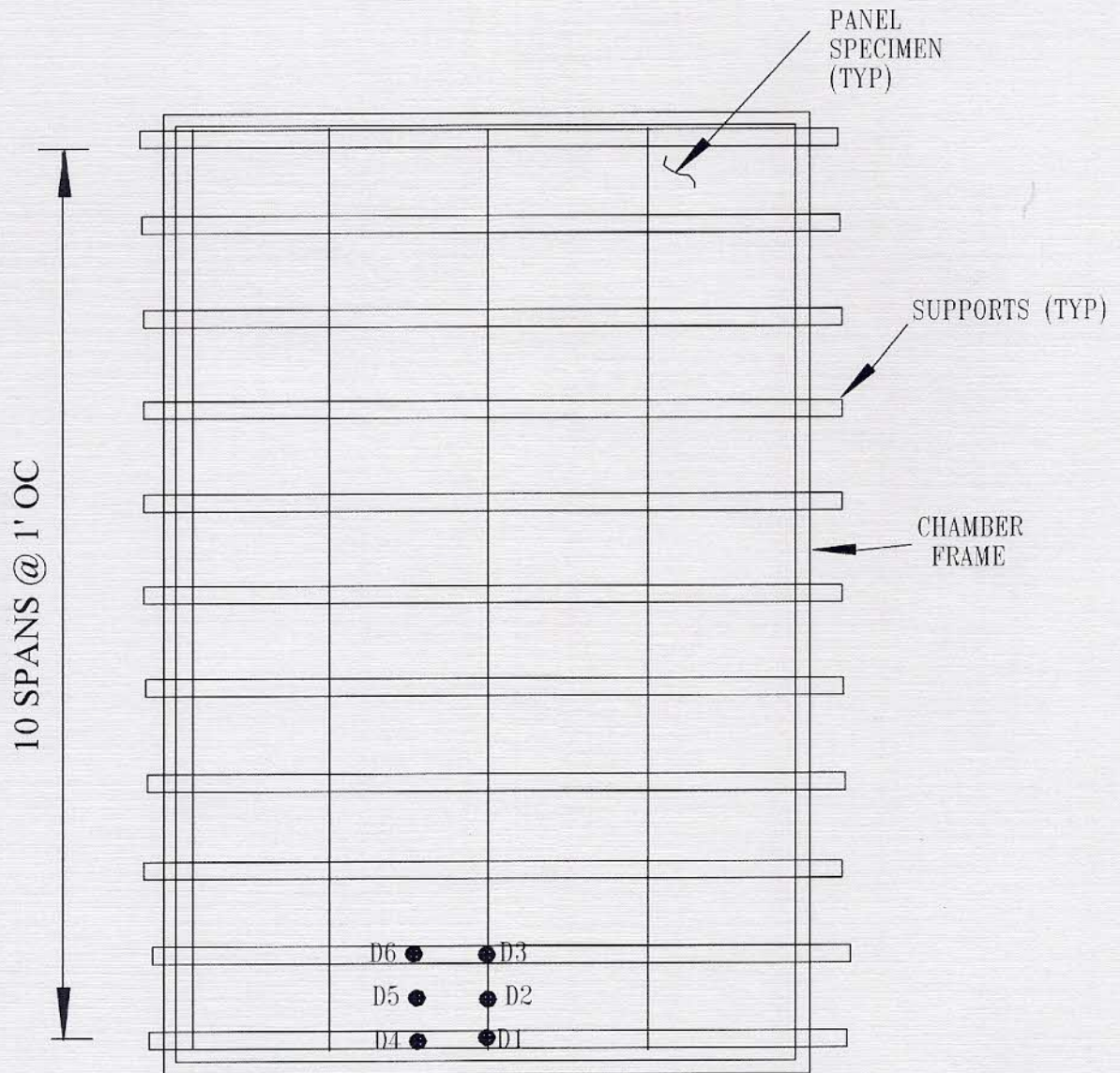
TEST "A"



⊕ DEFLECTION POINT

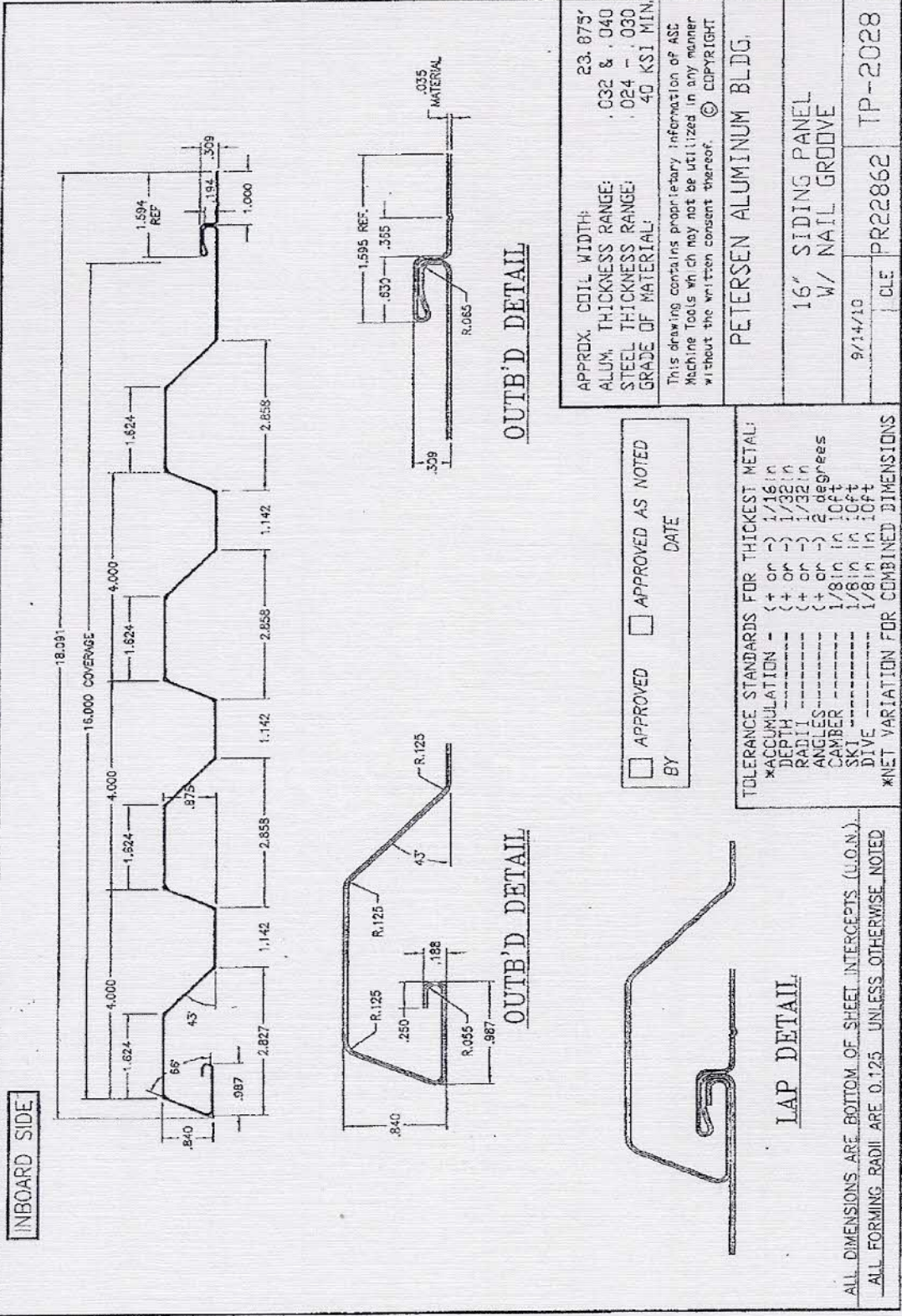
TEST ASSEMBLY

TEST "B"



● DEFLECTION POINT

TEST ASSEMBLY



Project No. T302-11

TENSILE TEST REPORT

Client: Petersen Aluminum Corp.
1005 Tonne Rd.
Elk Grove Village, IL 60007

Test Date: September 27, 2011

Test Method: ASTM A370-10

Material Description: 16" Siding Panel w/ Nail Groove, 22 ga steel

Sample No.	Width (in)	Thickness (in)	Yield Load (lb)	Max. Load (lb)	0.2% Offset Yield Strength (psi)	Tensile Strength (psi)	Elongation (% in 2 inches)
0066-11	0.495	0.030	763.8	826.3	51,430	55,644	29.9

Equipment Used: Tensile Machine #QT7-061196-020
Caliper #081410113-1
Extensometer #10311744D
Micrometer #52-222-001